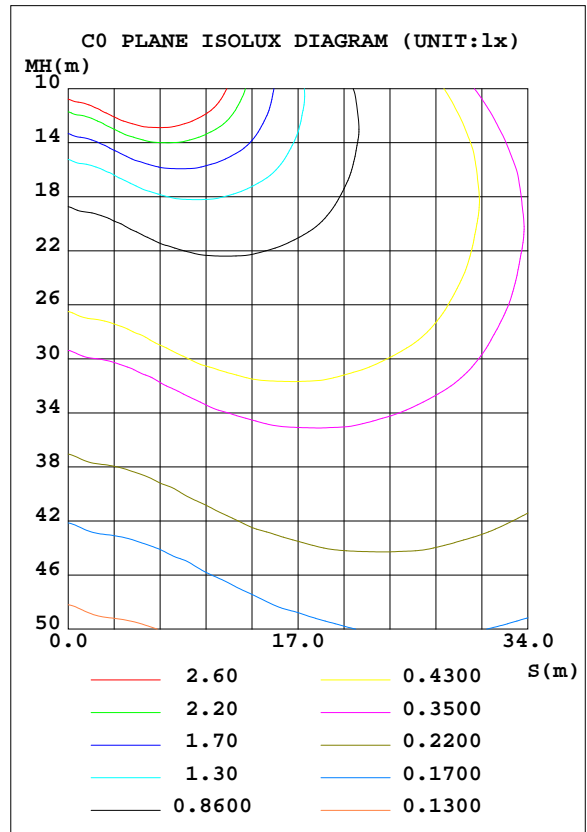
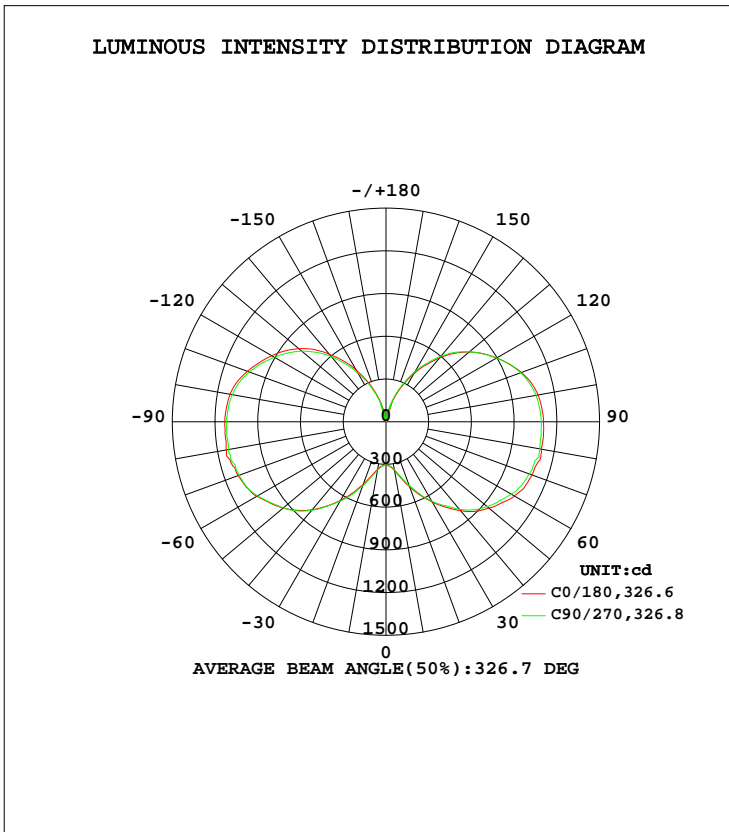


LUMINAIRE PHOTOMETRIC TEST REPORT

Test:U:119.8V I:0.6710A P:79.90W PF:0.9930 Lamp Flux:10657.9x1 lm		
NAME: 80W	TYPE:	WEIGHT:
SPEC.:	DIM.:	SERIAL No.:
MFR.: EVERFINE	SUR.:0.09*0.12	

DATA OF LAMP		PHOTOMETRIC DATA Eff: 133.39 lm/W			
MODEL		I _{max} (cd)	1146	S/MH(C0/180)	3.16
NOMINAL POWER(W)		LOR(%)	100.0	S/MH(C90/270)	3.16
RATED VOLTAGE(V)		TOTAL FLUX(lm)	10658	η UP, DN(C0-180)	22.9,26.6
NOMINAL FLUX(lm)	10657.9	CIE CLASS	DIFFUSE	η UP, DN(C180-360)	23.3,27.1
LAMPS INSIDE	1	η up(%)	46.2	CIBSE SHR NOM	2.00
TEST VOLTAGE(V)		η down(%)	53.8	CIBSE SHR MAX	0.00



C Range: 0 - 360DEG
 C Interval: 22.5DEG
 Test Speed: HIGH
 Temperature:25.3DEG
 Operators:LH
 Test Date:2017-08-31

γ Range: 0 - 180DEG
 γ Interval: 1.0DEG
 Test System:EVERFINE GO-2000B_V1 SYSTEM V2.0.351
 Humidity:65.0%
 Test Distance:9.660m [K=1.0000]
 Remarks:

ZONAL FLUX DIAGRAM

ZONAL FLUX DIAGRAM:

γ	C0	C45	C90	C135	C180	C225	C270	C315	γ	Φ zone	Φ total	%lum, lamp
10	349.5	347.7	340.9	334.6	338.3	340.6	345.4	350.1	0- 10	30.77	30.77	0.29,0.29
20	486.0	484.0	477.1	458.1	467.9	472.5	480.6	488.4	10- 20	115.8	146.6	1.38,1.38
30	652.2	654.7	644.4	630.7	635.9	652.1	643.2	654.6	20- 30	258.6	405.2	3.8,3.8
40	815.3	801.1	802.8	786.9	806.6	817.6	812.5	813.2	30- 40	451.5	856.7	8.04,8.04
50	944.0	916.6	926.7	910.1	942.7	933.4	940.5	926.6	40- 50	668.4	1525	14.3,14.3
60	1043	1000	1017	992.5	1047	1019	1041	1018	50- 60	864.8	2390	22.4,22.4
70	1091	1044	1072	1051	1104	1071	1098	1059	60- 70	1033	3423	32.1,32.1
80	1106	1058	1097	1073	1139	1098	1123	1067	70- 80	1134	4558	42.8,42.8
90	1107	1053	1090	1063	1131	1085	1118	1065	80- 90	1174	5732	53.8,53.8
100	1084	1033	1070	1043	1112	1065	1096	1044	90-100	1163	6895	64.7,64.7
110	1012	971.3	1006	983.2	1036	996.2	1022	976.6	100-110	1084	7979	74.9,74.9
120	897.6	865.6	896.1	878.4	927.3	893.9	905.9	869.6	110-120	927.4	8907	83.6,83.6
130	763.0	743.6	764.1	760.6	798.8	776.7	771.8	749.7	120-130	734.8	9641	90.5,90.5
140	585.8	586.5	602.0	600.1	620.4	611.8	597.2	585.5	130-140	523.6	10165	95.4,95.4
150	389.5	397.3	407.6	413.4	420.1	428.6	396.0	395.9	140-150	311.4	10476	98.3,98.3
160	195.2	197.7	212.9	217.8	221.5	222.4	202.5	197.9	150-160	141.3	10618	99.6,99.6
170	49.35	50.46	57.28	60.18	61.67	60.00	52.77	48.48	160-170	37.13	10655	100,100
180	2.857	2.841	2.879	3.033	2.872	2.857	2.773	2.880	170-180	2.990	10658	100,100
DEG	LUMINOUS INTENSITY:cd									UNIT:lm		

Conical surface Flux(90deg): 1164.6 lm

%lum = 10.9%
%lamp = 10.9%

Conical surface Flux(120deg): 2389.8 lm

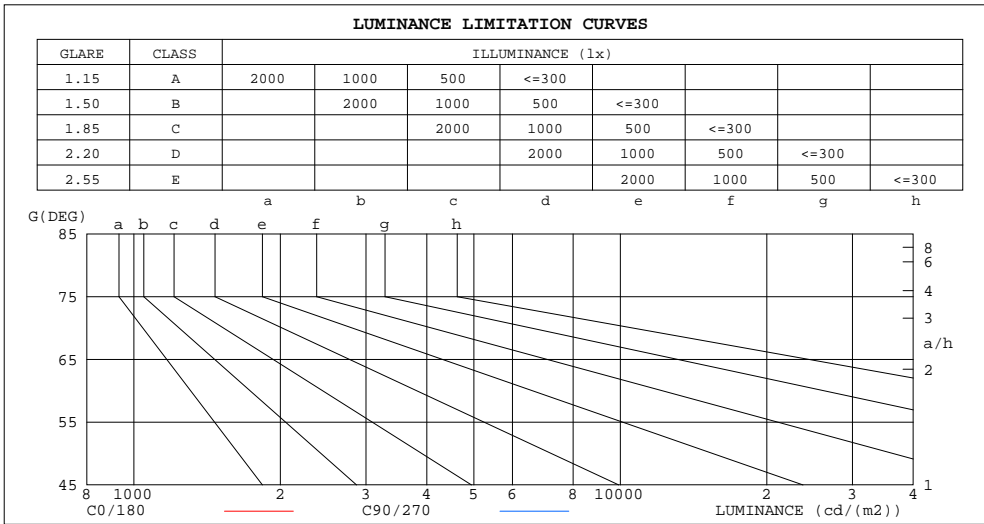
%lum = 22.4%
%lamp = 22.4%

C Range: 0 - 360DEG
C Interval: 22.5DEG
Test Speed: HIGH
Temperature:25.3DEG
Operators:LH
Test Date:2017-08-31

γ Range: 0 - 180DEG
γ Interval: 1.0DEG
Test System:EVERFINE GO-2000B_V1 SYSTEM V2.0.351
Humidity:65.0%
Test Distance:9.660m [K=1.0000]
Remarks:

LUMINANCE LIMITATION CURVES

Test:U:119.8V I:0.6710A P:79.90W PF:0.9930 Lamp Flux:10657.9x1 lm		
NAME: 80W	TYPE:	WEIGHT:
SPEC.:	DIM.:	SERIAL No.:
MFR.: EVERFINE	SUR.:0.09*0.12	



LUMINANCE cd/(m2)		
G (DEG)	C0/180	C90/270
85	1196873	1158496
80	598628	583003
75	400928	385230
70	299922	289195
65	239356	229610
60	195962	187727
55	162728	156205
50	138029	133051
45	118194	114125

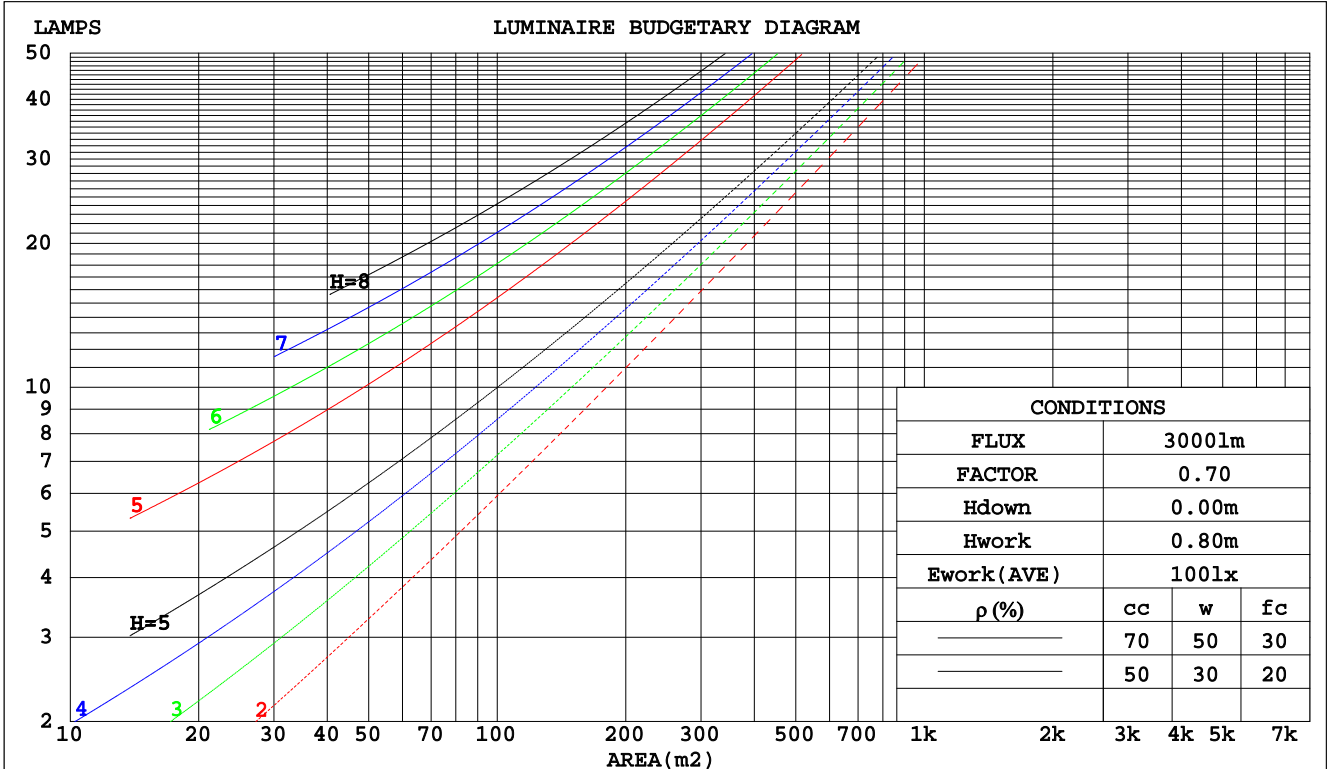
C Range: 0 - 360DEG
 C Interval: 22.5DEG
 Test Speed: HIGH
 Temperature: 25.3DEG
 Operators: LH
 Test Date: 2017-08-31

γ Range: 0 - 180DEG
 γ Interval: 1.0DEG
 Test System: EVERFINE GO-2000B_V1 SYSTEM V2.0.351
 Humidity: 65.0%
 Test Distance: 9.660m [K=1.0000]
 Remarks:

CU AND LUMINAIRE BUDGETARY ESTIMATE DIAGRAM

Test:U:119.8V I:0.6710A P:79.90W PF:0.9930 Lamp Flux:10657.9x1 lm		
NAME: 80W	TYPE:	WEIGHT:
SPEC.:	DIM.:	SERIAL No.:
MFR.: EVERFINE	SUR.:0.09*0.12	

pcc	80%			70%			50%			30%			10%			0
	50%	30%	10%	50%	30%	10%	50%	30%	10%	50%	30%	10%	50%	30%	10%	0
pw																0
pfc																0
RCR	RCR:Room Cavity Ratio			Coefficients of Utilization(CU)												
0.0	1.08	1.08	1.08	1.00	1.00	1.00	.85	.85	.85	.72	.72	.72	.60	.60	.60	.54
1.0	.86	.80	.75	.79	.74	.69	.66	.62	.58	.55	.51	.48	.44	.41	.39	.34
2.0	.72	.64	.56	.66	.59	.52	.55	.49	.44	.45	.40	.36	.35	.32	.29	.24
3.0	.62	.52	.44	.56	.48	.41	.47	.40	.34	.38	.33	.28	.29	.25	.22	.18
4.0	.53	.43	.36	.49	.40	.33	.40	.33	.28	.33	.27	.23	.25	.21	.17	.14
5.0	.47	.37	.30	.43	.34	.27	.35	.28	.23	.29	.23	.19	.22	.18	.14	.11
6.0	.41	.32	.25	.38	.29	.23	.31	.24	.19	.25	.20	.16	.20	.15	.12	.09
7.0	.37	.28	.21	.34	.26	.20	.28	.21	.16	.23	.17	.13	.18	.13	.10	.07
8.0	.33	.24	.18	.31	.23	.17	.25	.19	.14	.21	.15	.11	.16	.12	.09	.06
9.0	.30	.22	.16	.28	.20	.15	.23	.17	.12	.19	.14	.10	.15	.11	.07	.05
10.0	.27	.19	.14	.25	.18	.13	.21	.15	.11	.17	.12	.09	.14	.09	.07	.04



C Range: 0 - 360DEG
 C Interval: 22.5DEG
 Test Speed: HIGH
 Temperature: 25.3DEG
 Operators: LH
 Test Date: 2017-08-31

γ Range: 0 - 180DEG
 γ Interval: 1.0DEG
 Test System: EVERFINE GO-2000B_V1 SYSTEM V2.0.351
 Humidity: 65.0%
 Test Distance: 9.660m [K=1.0000]
 Remarks:

WEC AND CCEC

Test:U:119.8V I:0.6710A P:79.90W PF:0.9930 Lamp Flux:10657.9x1 lm		
NAME: 80W	TYPE:	WEIGHT:
SPEC.:	DIM.:	SERIAL No.:
MFR.: EVERFINE	SUR.:0.09*0.12	

ρcc	80%			70%			50%			30%			10%			0
ρw	50%	30%	10%	50%	30%	10%	50%	30%	10%	50%	30%	10%	50%	30%	10%	0
ρfc	20%			20%			20%			20%			20%			0
RCR	RCR:Room Cavity Ratio						Wall Exitance Coefficients(WEC)									
0.0																
1.0	.436	.248	.079	.415	.237	.075	.375	.215	.069	.338	.195	.063	.304	.176	.057	
2.0	.360	.198	.061	.341	.188	.058	.304	.169	.053	.271	.152	.048	.239	.135	.043	
3.0	.312	.166	.050	.294	.158	.047	.261	.141	.043	.230	.126	.039	.201	.111	.034	
4.0	.276	.144	.042	.260	.136	.040	.230	.122	.036	.201	.108	.033	.175	.095	.029	
5.0	.248	.127	.037	.234	.120	.035	.205	.107	.031	.179	.094	.028	.155	.083	.025	
6.0	.226	.113	.032	.212	.107	.031	.186	.095	.028	.162	.084	.025	.139	.073	.022	
7.0	.207	.102	.029	.194	.097	.028	.170	.086	.025	.148	.076	.022	.126	.066	.019	
8.0	.191	.093	.026	.179	.088	.025	.157	.078	.022	.136	.069	.020	.116	.060	.017	
9.0	.177	.086	.024	.166	.081	.023	.145	.072	.020	.126	.063	.018	.107	.054	.016	
10.0	.165	.079	.022	.155	.075	.021	.135	.066	.019	.117	.058	.017	.100	.050	.014	

ρcc	80%			70%			50%			30%			10%			0
ρw	50%	30%	10%	50%	30%	10%	50%	30%	10%	50%	30%	10%	50%	30%	10%	0
ρfc	20%			20%			20%			20%			20%			0
RCR	RCR:Room Cavity Ratio						Ceiling Cavity Exitance Coefficients(CCEC)									
0.0	.543	.543	.543	.464	.464	.464	.317	.317	.317	.182	.182	.182	.058	.058	.058	
1.0	.544	.510	.479	.466	.438	.413	.318	.301	.285	.183	.174	.166	.059	.056	.054	
2.0	.539	.489	.447	.462	.421	.387	.316	.291	.270	.182	.169	.158	.059	.055	.051	
3.0	.532	.474	.428	.456	.409	.371	.313	.284	.260	.181	.166	.153	.058	.054	.050	
4.0	.525	.463	.415	.450	.400	.361	.310	.279	.254	.179	.163	.150	.058	.053	.049	
5.0	.517	.454	.407	.444	.392	.354	.306	.274	.250	.177	.161	.148	.057	.053	.049	
6.0	.510	.446	.401	.438	.386	.349	.302	.271	.247	.175	.159	.147	.057	.052	.048	
7.0	.503	.440	.396	.432	.381	.345	.299	.267	.245	.174	.158	.146	.056	.052	.048	
8.0	.496	.435	.393	.427	.377	.343	.295	.265	.243	.172	.156	.145	.056	.051	.048	
9.0	.490	.430	.390	.422	.374	.341	.292	.263	.242	.170	.155	.144	.055	.051	.048	
10.0	.484	.426	.388	.417	.370	.339	.289	.261	.241	.169	.154	.144	.055	.051	.048	

C Range: 0 - 360DEG
 C Interval: 22.5DEG
 Test Speed: HIGH
 Temperature:25.3DEG
 Operators:LH
 Test Date:2017-08-31

γ Range: 0 - 180DEG
 γ Interval: 1.0DEG
 Test System:EVERFINE GO-2000B_V1 SYSTEM V2.0.351
 Humidity:65.0%
 Test Distance:9.660m [K=1.0000]
 Remarks:

UGR(Unified Glare Rating) Table

Test:U:119.8V I:0.6710A P:79.90W PF:0.9930 Lamp Flux:10657.9x1 lm										
NAME: 80W					TYPE:			WEIGHT:		
SPEC.:					DIM.:			SERIAL No.:		
MFR.: EVERFINE					SUR.:0.09*0.12					
ceiling/cavity	0.7	0.7	0.5	0.5	0.3	0.7	0.7	0.5	0.5	0.3
walls	0.5	0.3	0.5	0.3	0.3	0.5	0.3	0.5	0.3	0.3
working plane	0.2	0.2	0.2	0.2	0.2	0.2	0.2	0.2	0.2	0.2
Room dimensions	Viewed crosswise					Viewed endwise				
x = 2H y = 2H	27.8	28.9	28.6	29.8	30.9	27.7	28.9	28.5	29.7	30.8
3H	31.3	32.3	32.1	33.2	34.4	31.2	32.2	32.0	33.1	34.3
4H	33.2	34.2	34.1	35.1	36.3	33.1	34.1	34.0	35.0	36.2
6H	35.4	36.3	36.3	37.3	38.4	35.3	36.2	36.1	37.1	38.3
8H	36.6	37.5	37.5	38.4	39.6	36.4	37.3	37.3	38.3	39.4
12H	37.9	38.8	38.8	39.7	40.9	37.8	38.6	38.7	39.6	40.8
4H 2H	28.8	29.8	29.7	30.7	31.9	28.8	29.8	29.7	30.7	31.8
3H	32.4	33.3	33.3	34.2	35.4	32.3	33.2	33.2	34.1	35.3
4H	34.4	35.2	35.4	36.2	37.4	34.4	35.2	35.3	36.1	37.3
6H	36.7	37.4	37.7	38.4	39.6	36.6	37.3	37.6	38.3	39.5
8H	38.0	38.7	38.9	39.6	40.9	37.9	38.6	38.8	39.5	40.8
12H	39.5	40.1	40.4	41.1	42.3	39.3	39.9	40.3	40.9	42.2
8H 4H	35.2	35.8	36.1	36.8	38.0	35.1	35.8	36.0	36.7	38.0
6H	37.7	38.2	38.6	39.2	40.5	37.6	38.2	38.6	39.2	40.4
8H	39.1	39.6	40.1	40.6	41.9	39.0	39.5	40.0	40.5	41.8
12H	40.8	41.2	41.8	42.2	43.5	40.7	41.1	41.6	42.1	43.4
12H 4H	35.4	36.0	36.3	37.0	38.2	35.3	35.9	36.2	36.9	38.2
6H	38.0	38.5	39.0	39.5	40.8	37.9	38.4	38.9	39.4	40.7
8H	39.5	40.0	40.5	41.0	42.3	39.5	39.9	40.4	40.9	42.2
Variations with the observer position at spacings:										
S = 1.0H	+ 0.1 / - 0.1					+ 0.1 / - 0.1				
1.5H	+ 0.2 / - 0.3					+ 0.2 / - 0.3				
2.0H	+ 0.3 / - 0.4					+ 0.3 / - 0.4				

CIE Pub.117 Corrected 10658 lm Total Lamp Luminous Flux. (8log(F/F0) = 8.2)

C Range: 0 - 360DEG
 C Interval: 22.5DEG
 Test Speed: HIGH
 Temperature:25.3DEG
 Operators:LH
 Test Date:2017-08-31

γ Range: 0 - 180DEG
 γ Interval: 1.0DEG
 Test System:EVERFINE GO-2000B_V1 SYSTEM V2.0.351
 Humidity:65.0%
 Test Distance:9.660m [K=1.0000]
 Remarks:

UTILIZATION FACTORS TABLE

Test:U:119.8V I:0.6710A P:79.90W PF:0.9930 Lamp Flux:10657.9x1 lm		
NAME: 80W	TYPE:	WEIGHT:
SPEC.:	DIM.:	SERIAL No.:
MFR.: EVERFINE	SUR.:0.09*0.12	

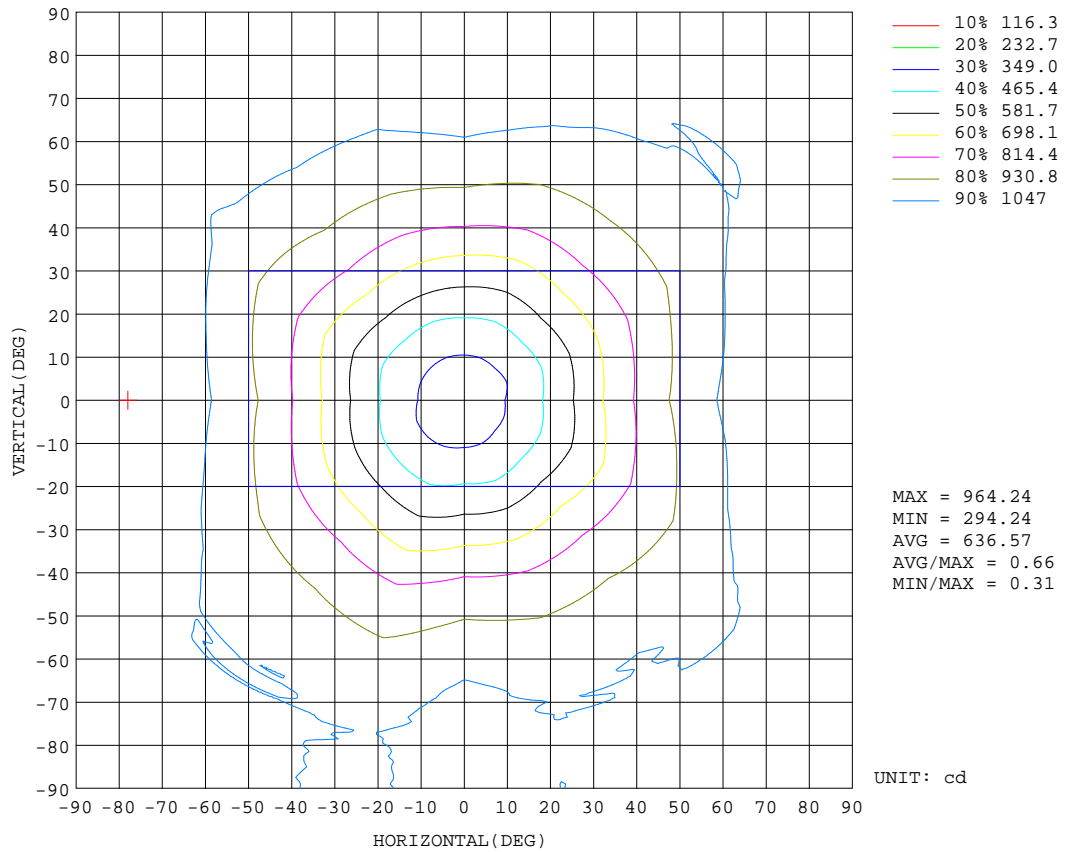
REFLECTANCE										
Ceiling	0.8	0.8	0.8	0.7	0.7	0.7	0.5	0.5	0.5	0
Walls	0.7	0.5	0.3	0.7	0.5	0.3	0.7	0.5	0.3	0
Working plane	0.2	0.2	0.2	0.2	0.2	0.2	0.2	0.2	0.2	0
ROOM INDEX	UTILIZATION FACTORS(PERCENT) $k(RI) \times RCR = 5$									
k = 0.60	35	22	14	33	21	14	30	19	13	6
0.80	43	29	20	41	28	19	36	25	18	8
1.00	50	36	26	47	34	25	41	32	23	11
1.25	57	43	33	54	40	31	47	36	28	15
1.50	63	48	38	58	45	36	50	40	32	17
2.00	71	57	47	66	53	44	56	47	39	22
2.50	76	63	54	70	59	50	60	51	44	25
3.00	80	68	59	74	64	55	63	55	48	28
4.00	86	75	67	79	70	63	67	60	54	32
5.00	89	80	73	82	75	68	70	64	59	34
ROOM INDEX	UF(total)									Direct
According to DIN EN 13032-2 2004			Suspended				SHRNOM = 1.25			

C Range: 0 - 360DEG
 C Interval: 22.5DEG
 Test Speed: HIGH
 Temperature:25.3DEG
 Operators:LH
 Test Date:2017-08-31

γ Range: 0 - 180DEG
 γ Interval: 1.0DEG
 Test System:EVERFINE GO-2000B_V1 SYSTEM V2.0.351
 Humidity:65.0%
 Test Distance:9.660m [K=1.0000]
 Remarks:

ISOCANDELA DIAGRAM

Test:U:119.8V I:0.6710A P:79.90W PF:0.9930 Lamp Flux:10657.9x1 lm		
NAME: 80W	TYPE:	WEIGHT:
SPEC.:	DIM.:	SERIAL No.:
MFR.: EVERFINE	SUR.:0.09*0.12	

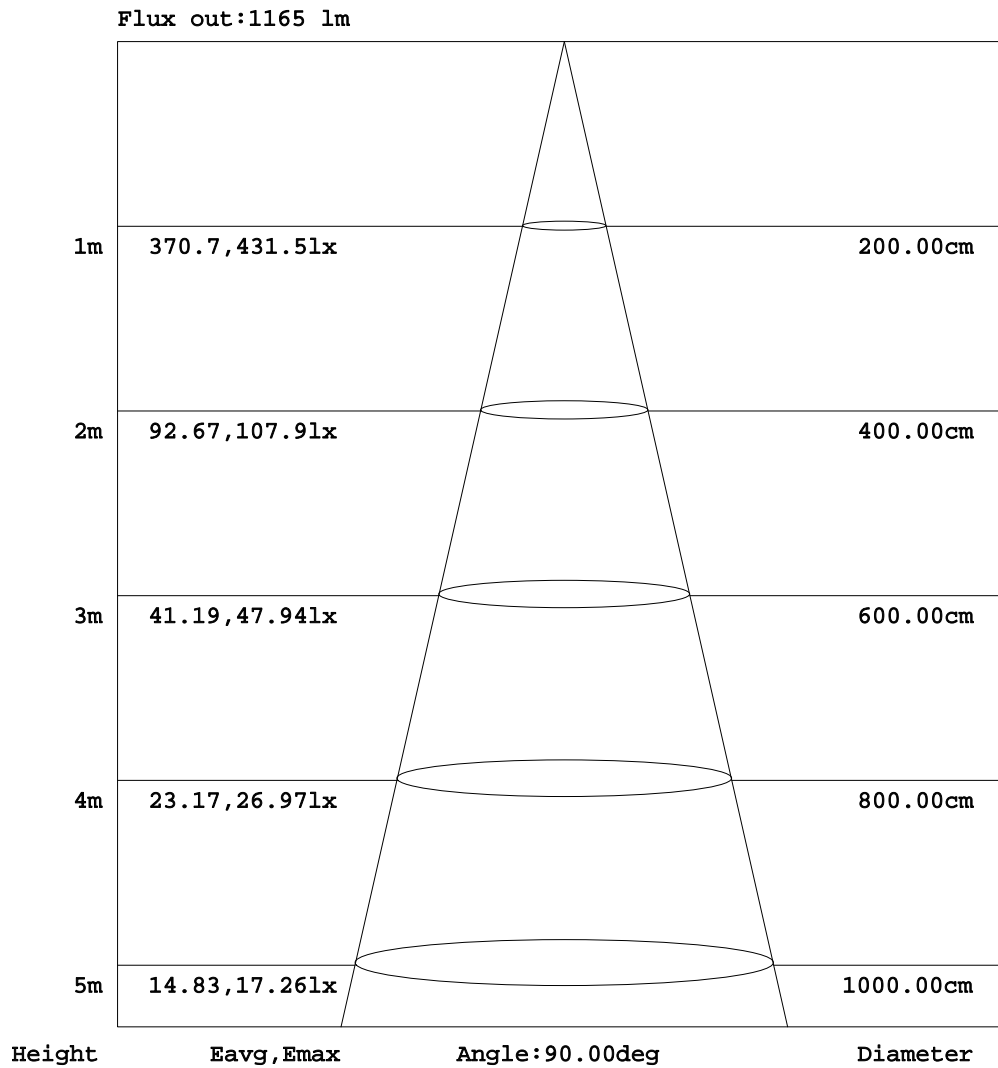


C Range: 0 - 360DEG
 C Interval: 22.5DEG
 Test Speed: HIGH
 Temperature:25.3DEG
 Operators:LH
 Test Date:2017-08-31

γ Range: 0 - 180DEG
 γ Interval: 1.0DEG
 Test System:EVERFINE GO-2000B_V1 SYSTEM V2.0.351
 Humidity:65.0%
 Test Distance:9.660m [K=1.0000]
 Remarks:

AAI Figure

Test:U:119.8V I:0.6710A P:79.90W PF:0.9930 Lamp Flux:10657.9x1 lm		
NAME: 80W	TYPE:	WEIGHT:
SPEC.:	DIM.:	SERIAL No.:
MFR.: EVERFINE	SUR.:0.09*0.12	



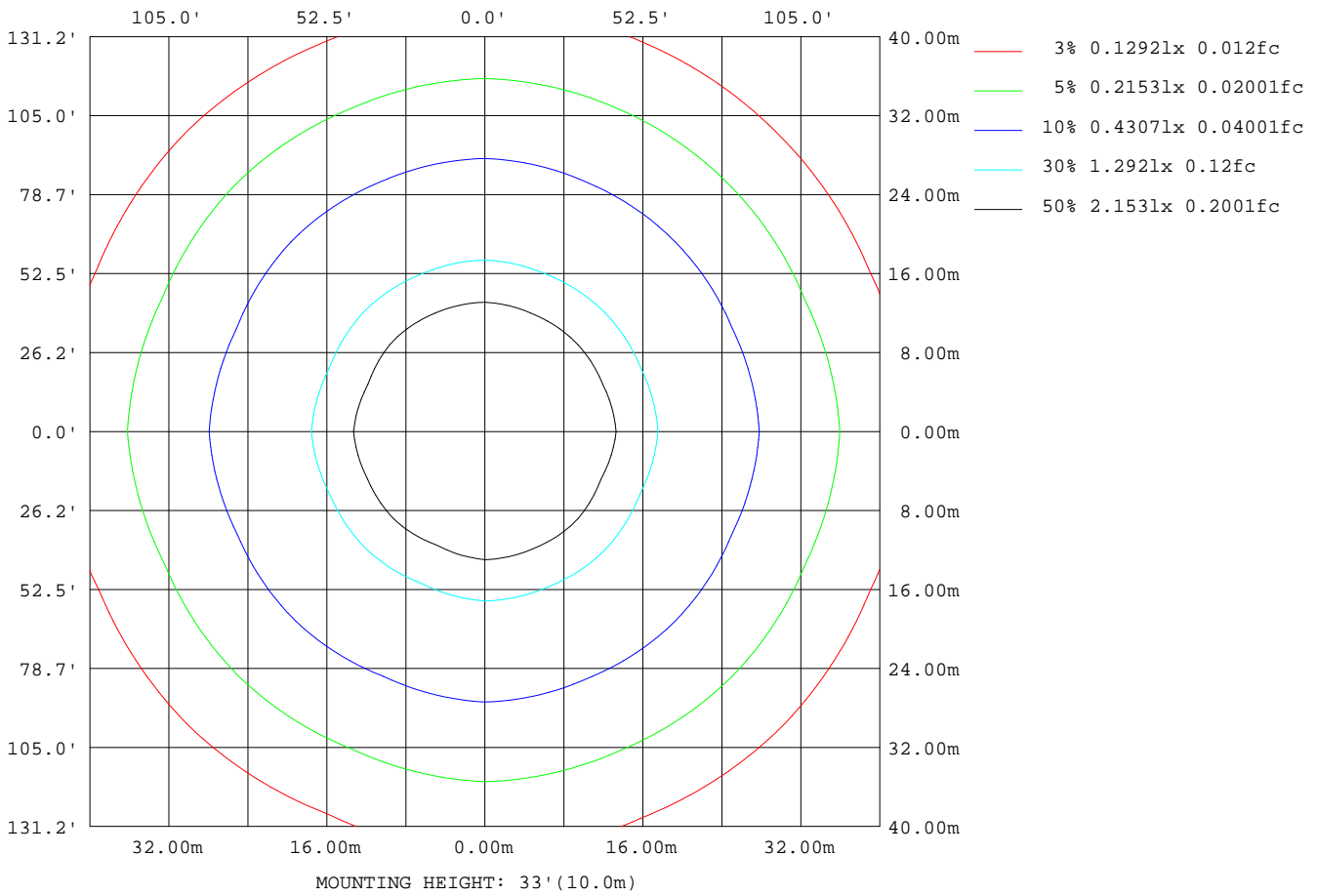
Note:The Curves indicate the illuminated area and the average illumination when the luminaire is at different distance.

C Range: 0 - 360DEG
 C Interval: 22.5DEG
 Test Speed: HIGH
 Temperature:25.3DEG
 Operators:LH
 Test Date:2017-08-31

γ Range: 0 - 180DEG
 γ Interval: 1.0DEG
 Test System:EVERFINE GO-2000B_V1 SYSTEM V2.0.351
 Humidity:65.0%
 Test Distance:9.660m [K=1.0000]
 Remarks:

ISOLUX DIAGRAM

Test:U:119.8V I:0.6710A P:79.90W PF:0.9930 Lamp Flux:10657.9x1 lm		
NAME: 80W	TYPE:	WEIGHT:
SPEC.:	DIM.:	SERIAL No.:
MFR.: EVERFINE	SUR.:0.09*0.12	



C Range: 0 - 360DEG
 C Interval: 22.5DEG
 Test Speed: HIGH
 Temperature:25.3DEG
 Operators:LH
 Test Date:2017-08-31

γ Range: 0 - 180DEG
 γ Interval: 1.0DEG
 Test System:EVERFINE GO-2000B_V1 SYSTEM V2.0.351
 Humidity:65.0%
 Test Distance:9.660m [K=1.0000]
 Remarks:

LED Avg.L Report

Test:U:119.8V I:0.6710A P:79.90W PF:0.9930 Lamp Flux:10657.9x1 lm		
NAME: 80W	TYPE:	WEIGHT:
SPEC.:	DIM.:	SERIAL No.:
MFR.: EVERFINE	SUR.:0.09*0.12	

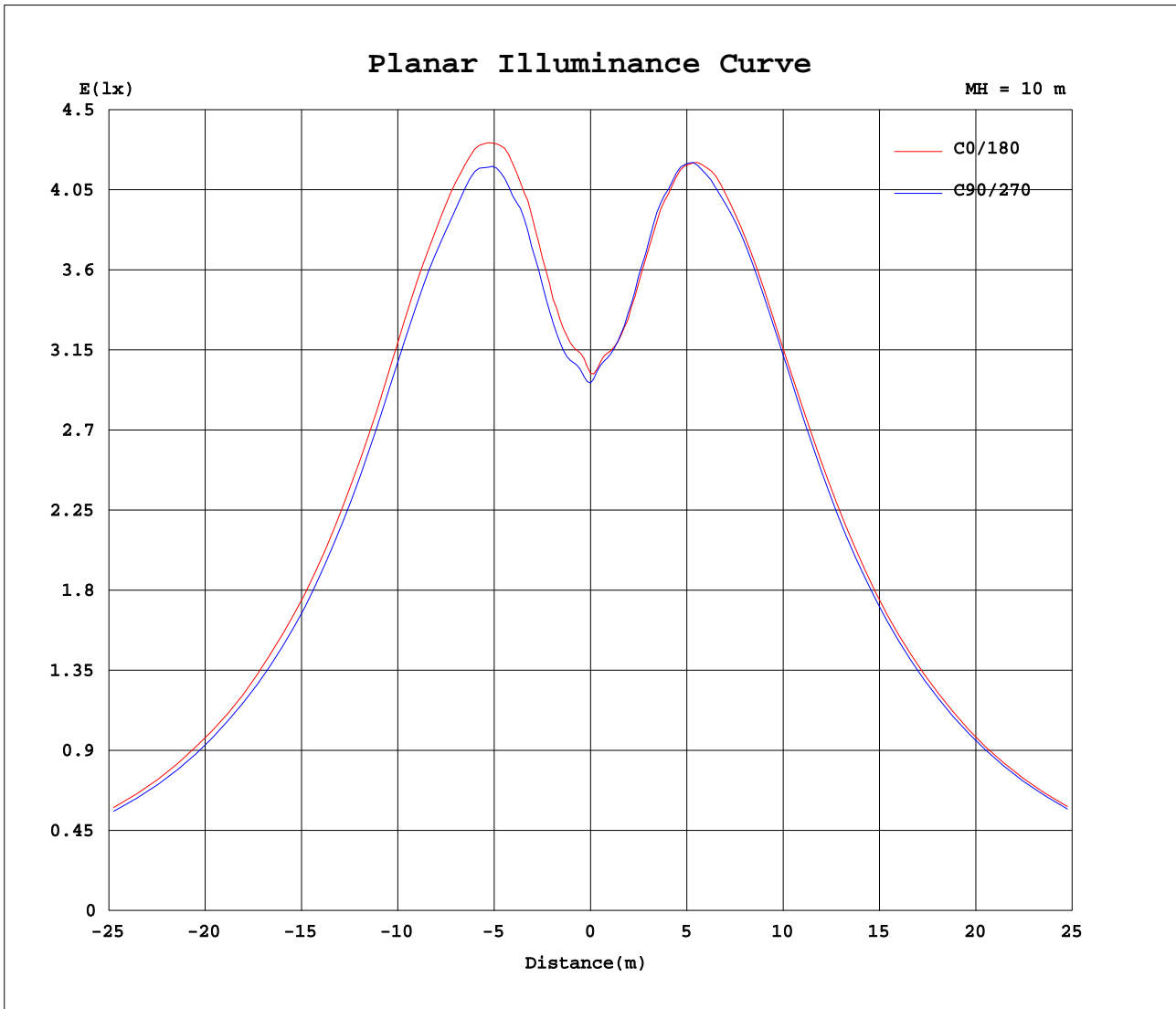
AvgL	cd/m2
L_0~180(65)av	236670
L_0~180(75)av	398806
L_0~180(85)av	1191583
L_90~270(65)av	233597
L_90~270(75)av	392221
L_90~270(85)av	1176875
L_45(65)av	228977
L_45(75)av	381397
L_45(85)av	1136513

Standard: GB/T 29293-2012

C Range: 0 - 360DEG
 C Interval: 22.5DEG
 Test Speed: HIGH
 Temperature:25.3DEG
 Operators:LH
 Test Date:2017-08-31

γ Range: 0 - 180DEG
 γ Interval: 1.0DEG
 Test System:EVERFINE GO-2000B_V1 SYSTEM V2.0.351
 Humidity:65.0%
 Test Distance:9.660m [K=1.0000]
 Remarks:

Planar Illuminance Curve



C Range: 0 - 360DEG
 C Interval: 22.5DEG
 Test Speed: HIGH
 Temperature: 25.3DEG
 Operators: LH
 Test Date: 2017-08-31

γ Range: 0 - 180DEG
 γ Interval: 1.0DEG
 Test System: EVERFINE GO-2000B_V1 SYSTEM V2.0.351
 Humidity: 65.0%
 Test Distance: 9.660m [K=1.0000]
 Remarks:

LUMINOUS DISTRIBUTION INTENSITY DATA

Test:U:119.8V I:0.6710A P:79.90W PF:0.9930 Lamp Flux:10657.9x1 lm		
NAME: 80W	TYPE:	WEIGHT:
SPEC.:	DIM.:	SERIAL No.:
MFR.: EVERFINE	SUR.:0.09*0.12	

Table--1

UNIT: cd

C(DEG) γ (DEG)	0	22.5	45	67.5	90	112.5	135	157.5	180	202.5	225	247.5	270	292.5	315	337.5			
0	297	297	297	297	297	297	297	297	297	297	297	297	297	297	297	297			
5	315	315	314	314	312	312	311	311	312	313	313	314	315	315	315	315			
10	349	346	348	342	341	336	335	335	338	337	341	343	345	348	350	346			
15	410	404	406	394	400	387	386	386	393	388	397	398	404	403	411	405			
20	486	472	484	467	477	452	458	460	468	453	473	473	481	476	488	481			
25	569	544	565	549	559	525	542	539	551	528	558	559	563	554	572	563			
30	652	622	655	634	644	605	631	629	636	611	652	646	643	637	655	643			
35	733	689	727	711	719	675	706	708	722	686	730	728	725	710	732	727			
40	815	770	801	790	803	750	787	790	807	769	818	808	813	795	813	802			
45	889	835	868	858	874	820	853	852	879	840	882	877	886	861	876	870			
50	944	882	917	910	927	874	910	913	943	887	933	931	941	914	927	924			
55	993	930	960	949	971	918	951	959	995	939	975	971	990	966	970	964			
60	1043	977	1000	994	1017	963	992	998	1047	987	1019	1017	1041	1013	1018	1011			
65	1076	1011	1033	1024	1051	1004	1037	1035	1084	1030	1061	1049	1081	1052	1050	1040			
70	1091	1027	1044	1036	1072	1018	1051	1054	1104	1040	1071	1070	1098	1062	1059	1054			
75	1104	1041	1056	1045	1080	1030	1054	1058	1125	1063	1087	1072	1112	1077	1067	1060			
80	1106	1044	1058	1054	1097	1046	1073	1075	1139	1072	1098	1083	1123	1079	1067	1060			
85	1110	1043	1057	1049	1094	1040	1064	1068	1133	1067	1089	1081	1121	1083	1070	1063			
90	1107	1041	1053	1046	1090	1039	1063	1064	1131	1066	1085	1077	1118	1079	1065	1059			
95	1099	1033	1046	1038	1083	1033	1055	1058	1125	1058	1078	1071	1112	1071	1058	1051			
100	1084	1019	1033	1026	1070	1020	1043	1046	1112	1045	1065	1058	1096	1056	1044	1036			
105	1056	992	1009	1004	1044	996	1020	1023	1083	1016	1039	1032	1067	1026	1019	1011			
110	1012	950	971	969	1006	958	983	984	1036	970	996	991	1022	983	977	969			
115	957	898	922	920	955	910	933	935	983	916	945	940	966	928	925	916			
120	898	840	866	864	896	853	878	883	927	862	894	888	906	869	870	862			
125	834	776	807	807	832	788	821	826	868	804	841	832	843	803	814	805			
130	763	708	744	743	764	721	761	762	799	737	777	765	772	734	750	741			
135	680	638	671	666	690	651	684	686	718	661	702	686	689	658	675	661			
140	586	546	586	584	602	565	600	602	620	566	612	602	597	562	585	576			
145	486	454	489	487	502	472	506	506	521	477	521	503	496	470	490	480			
150	389	366	397	389	408	384	413	412	420	389	429	411	396	378	396	388			
155	289	272	295	289	309	289	312	310	316	294	324	307	298	280	295	284			
160	195	185	198	196	213	203	218	217	222	205	222	209	203	191	198	191			
165	112	110	114	112	126	124	129	128	133	124	130	121	119	111	111	107			
170	49.3	48.5	50.5	52.4	57.3	59.7	60.2	60.8	61.7	60.4	60.0	55.8	52.8	49.4	48.5	47.5			
175	18.3	19.0	19.8	21.4	22.9	23.2	23.4	24.3	23.1	22.5	21.1	20.8	18.1	17.9	16.7	17.1			
180	2.86	2.86	2.84	2.82	2.88	2.83	3.03	3.02	2.87	2.87	2.86	2.85	2.77	2.75	2.88	2.86			

C Range: 0 - 360DEG
 C Interval: 22.5DEG
 Test Speed: HIGH
 Temperature:25.3DEG
 Operators:LH
 Test Date:2017-08-31

γ Range: 0 - 180DEG
 γ Interval: 1.0DEG
 Test System:EVERFINE GO-2000B_V1 SYSTEM V2.0.351
 Humidity:65.0%
 Test Distance:9.660m [K=1.0000]
 Remarks: