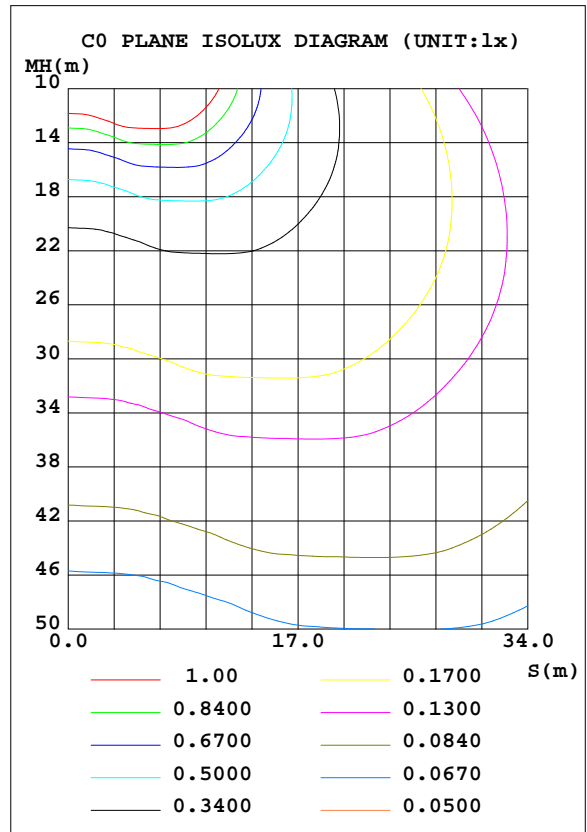
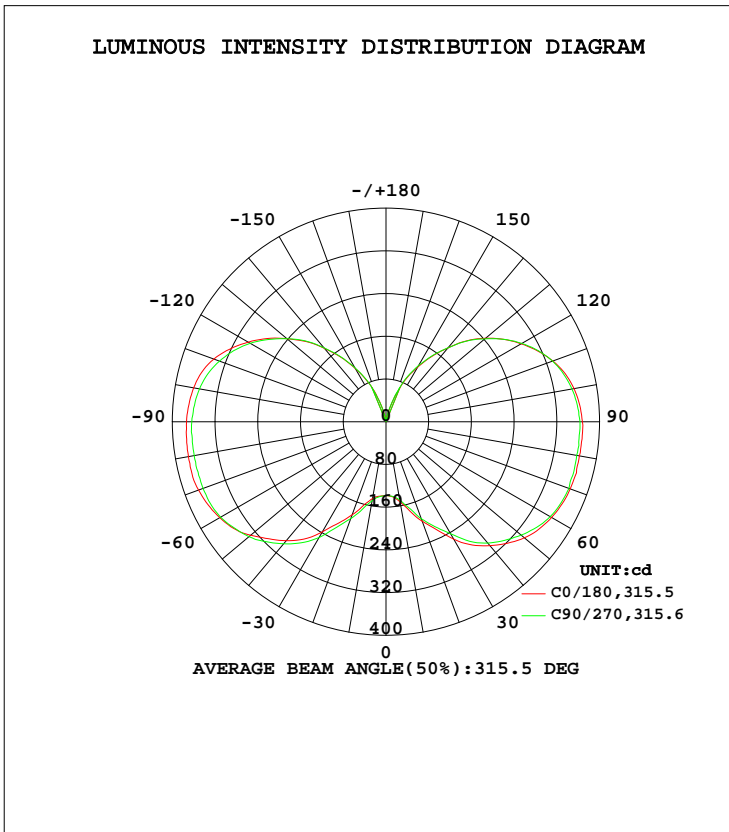


LUMINAIRE PHOTOMETRIC TEST REPORT

Test:U:219.0V I:0.1280A P:26.70W PF:0.9460 Lamp Flux:3576.8x1 lm		
NAME: 27W	TYPE:	WEIGHT:
SPEC.:	DIM.:	SERIAL No.:
MFR.: EVERFINE	SUR.:0.07*0.1	Shielding Angle:

DATA OF LAMP		PHOTOMETRIC DATA Eff: 133.96 lm/W			
MODEL		I _{max} (cd)	376.4	S/MH(C0/180)	2.76
NOMINAL POWER(W)		LOR(%)	100.0	S/MH(C90/270)	2.75
RATED VOLTAGE(V)		TOTAL FLUX(lm)	3576.8	η UP, DN(C0-180)	22.0,27.7
NOMINAL FLUX(lm)	3576.8	CIE CLASS	DIFFUSE	η UP, DN(C180-360)	22.2,28.0
LAMPS INSIDE	1	η up(%)	44.2	CIBSE SHR NOM	2.00
TEST VOLTAGE(V)		η down(%)	55.8	CIBSE SHR MAX	0.00



C Range: 0 - 360DEG
 C Interval: 22.5DEG
 Test Speed: HIGH
 Temperature:25.3DEG
 Operators:LH
 Test Date:2018-01-28

γ Range: 0 - 180DEG
 γ Interval: 1.0DEG
 Test System:EVERFINE GO-2000B_V1 SYSTEM V2.0.351
 Humidity:65.0%
 Test Distance:9.660m [K=1.0000]
 Remarks:

ZONAL FLUX DIAGRAM

ZONAL FLUX DIAGRAM:

γ	C0	C45	C90	C135	C180	C225	C270	C315	γ	Φ zone	Φ total	%lum, lamp
10	152.6	147.8	149.3	147.6	146.3	148.8	150.0	151.9	0- 10	13.69	13.69	0.38,0.38
20	198.0	189.0	193.5	188.9	185.3	190.8	193.0	196.2	10- 20	48.92	62.62	1.75,1.75
30	253.9	238.7	242.3	238.8	237.7	246.3	250.3	253.7	20- 30	102.8	165.4	4.62,4.62
40	303.0	291.2	296.7	292.9	290.8	295.7	298.4	300.7	30- 40	173.9	339.3	9.49,9.49
50	338.2	325.7	330.5	329.7	330.8	332.5	334.9	337.0	40- 50	245.7	585.0	16.4,16.4
60	358.1	343.9	355.2	351.3	359.3	355.2	357.4	355.4	50- 60	307.4	892.5	25,25
70	367.1	346.0	364.7	356.1	373.7	363.8	364.5	358.1	60- 70	349.3	1242	34.7,34.7
80	367.8	344.4	362.7	358.6	375.7	368.8	364.6	355.8	70- 80	371.6	1613	45.1,45.1
90	367.8	344.8	363.4	359.1	373.3	368.8	363.5	354.3	80- 90	381.5	1995	55.8,55.8
100	357.6	335.4	353.6	348.3	365.7	357.6	354.7	344.9	90-100	376.5	2371	66.3,66.3
110	332.8	314.9	332.1	323.6	343.3	331.3	332.0	323.9	100-110	350.5	2722	76.1,76.1
120	292.2	281.3	293.7	289.6	298.2	292.8	293.9	290.2	110-120	302.7	3025	84.6,84.6
130	243.4	234.4	241.8	241.5	242.1	243.0	242.3	242.5	120-130	239.0	3264	91.2,91.2
140	180.7	172.4	180.8	180.3	179.8	181.5	180.8	180.4	130-140	165.8	3429	95.9,95.9
150	118.1	113.0	120.8	118.7	115.7	118.2	117.3	117.7	140-150	95.87	3525	98.6,98.6
160	53.87	50.15	56.62	55.72	54.22	55.02	51.70	50.83	150-160	42.62	3568	99.8,99.8
170	5.343	5.608	7.749	8.547	7.645	6.231	5.686	4.324	160-170	8.616	3577	100,100
180	1.231	1.225	1.233	1.223	1.231	1.240	1.233	1.208	170-180	0.2757	3577	100,100
DEG	LUMINOUS INTENSITY:cd									UNIT:lm		

Conical surface Flux(90deg): 453.6 lm

%lum = 12.7%
%lamp = 12.7%

Conical surface Flux(120deg): 892.45 lm

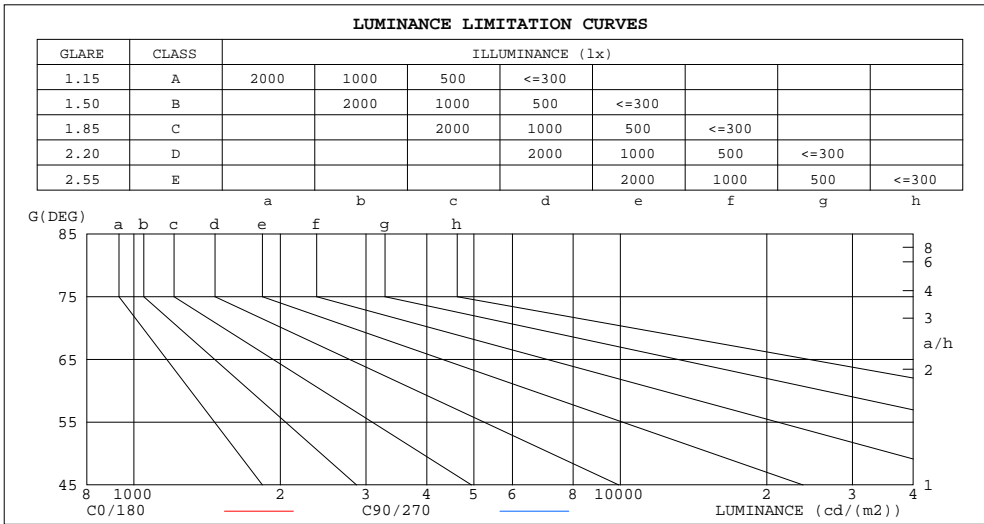
%lum = 25.0%
%lamp = 25.0%

C Range: 0 - 360DEG
C Interval: 22.5DEG
Test Speed: HIGH
Temperature:25.3DEG
Operators:LH
Test Date:2018-01-28

γ Range: 0 - 180DEG
γ Interval: 1.0DEG
Test System:EVERFINE GO-2000B_V1 SYSTEM V2.0.351
Humidity:65.0%
Test Distance:9.660m [K=1.0000]
Remarks:

LUMINANCE LIMITATION CURVES

Test:U:219.0V I:0.1280A P:26.70W PF:0.9460 Lamp Flux:3576.8x1 lm		
NAME: 27W	TYPE:	WEIGHT:
SPEC.:	DIM.:	SERIAL No.:
MFR.: EVERFINE	SUR.:0.07*0.1	Shielding Angle:



LUMINANCE cd/(m2)		
G(DEG)	C0/180	C90/270
85	611103	593441
80	306114	297644
75	206277	200449
70	155117	151982
65	124388	121781
60	103505	101252
55	88192	85651
50	76040	73268
45	65745	63328

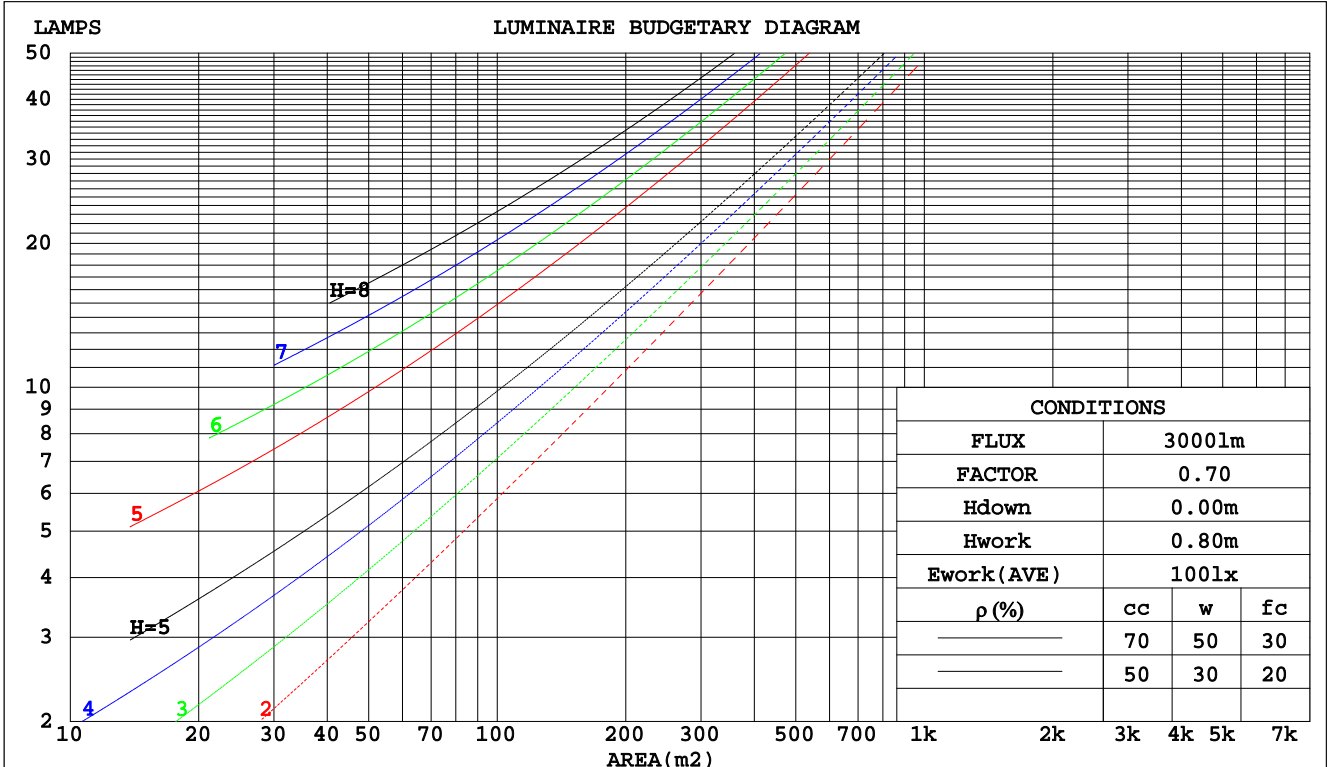
C Range: 0 - 360DEG
 C Interval: 22.5DEG
 Test Speed: HIGH
 Temperature:25.3DEG
 Operators:LH
 Test Date:2018-01-28

γ Range: 0 - 180DEG
 γ Interval: 1.0DEG
 Test System:EVERFINE GO-2000B_V1 SYSTEM V2.0.351
 Humidity:65.0%
 Test Distance:9.660m [K=1.0000]
 Remarks:

CU AND LUMINAIRE BUDGETARY ESTIMATE DIAGRAM

Test:U:219.0V I:0.1280A P:26.70W PF:0.9460 Lamp Flux:3576.8x1 lm		
NAME: 27W	TYPE:	WEIGHT:
SPEC.:	DIM.:	SERIAL No.:
MFR.: EVERFINE	SUR.:0.07*0.1	Shielding Angle:

pcc	80%			70%			50%			30%			10%			0
pw	50%	30%	10%	50%	30%	10%	50%	30%	10%	50%	30%	10%	50%	30%	10%	0
pfc	20%			20%			20%			20%			20%			0
RCR	RCR:Room Cavity Ratio															
	Coefficients of Utilization(CU)															
0.0	1.09	1.09	1.09	1.01	1.01	1.01	.87	.87	.87	.73	.73	.73	.61	.61	.61	.56
1.0	.87	.81	.76	.80	.75	.70	.68	.64	.60	.56	.53	.50	.46	.43	.41	.36
2.0	.73	.64	.57	.67	.60	.53	.56	.50	.45	.46	.42	.38	.37	.34	.31	.26
3.0	.62	.53	.45	.57	.49	.42	.48	.41	.36	.39	.34	.30	.31	.27	.24	.19
4.0	.54	.44	.37	.50	.41	.34	.41	.34	.29	.34	.28	.24	.27	.22	.19	.15
5.0	.47	.38	.30	.44	.35	.28	.36	.29	.24	.30	.24	.20	.24	.19	.15	.12
6.0	.42	.32	.26	.39	.30	.24	.32	.25	.20	.26	.21	.17	.21	.16	.13	.10
7.0	.37	.28	.22	.35	.26	.20	.29	.22	.17	.24	.18	.14	.19	.14	.11	.08
8.0	.34	.25	.19	.31	.23	.18	.26	.20	.15	.21	.16	.12	.17	.13	.10	.07
9.0	.31	.22	.17	.28	.21	.15	.24	.17	.13	.20	.14	.11	.16	.11	.08	.06
10.0	.28	.20	.15	.26	.18	.13	.22	.16	.11	.18	.13	.09	.14	.10	.07	.05



C Range: 0 - 360DEG
 C Interval: 22.5DEG
 Test Speed: HIGH
 Temperature: 25.3DEG
 Operators: LH
 Test Date: 2018-01-28

γ Range: 0 - 180DEG
 γ Interval: 1.0DEG
 Test System: EVERFINE GO-2000B_V1 SYSTEM V2.0.351
 Humidity: 65.0%
 Test Distance: 9.660m [K=1.0000]
 Remarks:

WEC AND CCEC

Test:U:219.0V I:0.1280A P:26.70W PF:0.9460 Lamp Flux:3576.8x1 lm		
NAME: 27W	TYPE:	WEIGHT:
SPEC.:	DIM.:	SERIAL No.:
MFR.: EVERFINE	SUR.:0.07*0.1	Shielding Angle:

ρcc	80%			70%			50%			30%			10%			0
ρw	50%	30%	10%	50%	30%	10%	50%	30%	10%	50%	30%	10%	50%	30%	10%	0
ρfc	20%			20%			20%			20%			20%			0
RCR	RCR:Room Cavity Ratio						Wall Exitance Coefficients(WEC)									
0.0																
1.0	.431	.245	.078	.410	.234	.074	.371	.213	.068	.335	.193	.062	.302	.175	.057	
2.0	.357	.196	.060	.339	.186	.057	.303	.169	.052	.270	.152	.047	.240	.136	.043	
3.0	.310	.165	.049	.293	.157	.047	.261	.141	.043	.231	.126	.039	.203	.112	.035	
4.0	.275	.143	.042	.260	.136	.040	.230	.122	.036	.202	.109	.033	.177	.096	.029	
5.0	.248	.126	.037	.233	.120	.035	.206	.107	.032	.181	.095	.028	.157	.084	.025	
6.0	.225	.113	.032	.212	.107	.031	.187	.096	.028	.163	.085	.025	.141	.074	.022	
7.0	.207	.102	.029	.194	.097	.028	.171	.086	.025	.149	.076	.022	.129	.067	.020	
8.0	.191	.093	.026	.179	.088	.025	.158	.079	.023	.137	.070	.020	.118	.061	.018	
9.0	.177	.086	.024	.166	.081	.023	.146	.072	.021	.127	.064	.018	.110	.056	.016	
10.0	.165	.079	.022	.155	.075	.021	.136	.067	.019	.119	.059	.017	.102	.051	.015	

ρcc	80%			70%			50%			30%			10%			0
ρw	50%	30%	10%	50%	30%	10%	50%	30%	10%	50%	30%	10%	50%	30%	10%	0
ρfc	20%			20%			20%			20%			20%			0
RCR	RCR:Room Cavity Ratio						Ceiling Cavity Exitance Coefficients(CCEC)									
0.0	.527	.527	.527	.451	.451	.451	.308	.308	.308	.177	.177	.177	.057	.057	.057	
1.0	.528	.495	.465	.452	.425	.400	.309	.292	.277	.178	.169	.161	.057	.054	.052	
2.0	.523	.474	.432	.448	.408	.374	.307	.282	.261	.177	.164	.153	.057	.053	.050	
3.0	.516	.458	.412	.443	.396	.358	.304	.275	.251	.175	.160	.148	.056	.052	.048	
4.0	.509	.447	.400	.437	.386	.347	.300	.269	.245	.174	.158	.145	.056	.051	.048	
5.0	.501	.438	.391	.430	.379	.340	.296	.265	.240	.172	.155	.143	.055	.051	.047	
6.0	.494	.431	.385	.425	.373	.335	.293	.261	.237	.170	.154	.141	.055	.050	.047	
7.0	.487	.424	.381	.419	.368	.332	.289	.258	.235	.168	.152	.140	.054	.050	.046	
8.0	.480	.419	.377	.413	.364	.329	.286	.255	.233	.166	.151	.139	.054	.049	.046	
9.0	.474	.415	.375	.408	.360	.327	.283	.253	.232	.165	.149	.138	.053	.049	.046	
10.0	.468	.411	.373	.404	.357	.325	.280	.251	.231	.163	.148	.138	.053	.049	.046	

C Range: 0 - 360DEG
 C Interval: 22.5DEG
 Test Speed: HIGH
 Temperature:25.3DEG
 Operators:LH
 Test Date:2018-01-28

γ Range: 0 - 180DEG
 γ Interval: 1.0DEG
 Test System:EVERFINE GO-2000B_V1 SYSTEM V2.0.351
 Humidity:65.0%
 Test Distance:9.660m [K=1.0000]
 Remarks:

UGR(Unified Glare Rating) Table

Test:U:219.0V I:0.1280A P:26.70W PF:0.9460 Lamp Flux:3576.8x1 lm										
NAME: 27W					TYPE:			WEIGHT:		
SPEC.:					DIM.:			SERIAL No.:		
MFR.: EVERFINE					SUR.:0.07*0.1			Shielding Angle:		
ceiling/cavity	0.7	0.7	0.5	0.5	0.3	0.7	0.7	0.5	0.5	0.3
walls	0.5	0.3	0.5	0.3	0.3	0.5	0.3	0.5	0.3	0.3
working plane	0.2	0.2	0.2	0.2	0.2	0.2	0.2	0.2	0.2	0.2
Room dimensions	Viewed crosswise					Viewed endwise				
x = 2H y = 2H	25.8	27.0	26.6	27.8	28.9	25.7	26.9	26.5	27.7	28.8
3H	29.1	30.2	30.0	31.1	32.2	29.0	30.1	29.9	31.0	32.1
4H	31.0	32.0	31.9	32.9	34.0	30.9	31.9	31.7	32.8	33.9
6H	33.1	34.0	34.0	34.9	36.1	32.9	33.9	33.8	34.8	35.9
8H	34.3	35.2	35.1	36.1	37.2	34.1	35.0	35.0	35.9	37.1
12H	35.6	36.5	36.5	37.4	38.5	35.4	36.3	36.3	37.2	38.4
4H 2H	26.8	27.8	27.6	28.7	29.8	26.7	27.7	27.6	28.6	29.7
3H	30.2	31.1	31.1	32.0	33.1	30.1	31.0	31.0	31.9	33.1
4H	32.2	33.0	33.0	33.9	35.1	32.1	32.9	33.0	33.8	35.0
6H	34.4	35.1	35.3	36.0	37.2	34.3	35.0	35.2	35.9	37.1
8H	35.6	36.3	36.6	37.3	38.5	35.5	36.2	36.4	37.1	38.4
12H	37.1	37.7	38.0	38.7	39.9	36.9	37.6	37.9	38.5	39.8
8H 4H	32.8	33.5	33.8	34.5	35.7	32.8	33.4	33.7	34.4	35.6
6H	35.3	35.9	36.2	36.8	38.1	35.2	35.8	36.1	36.7	38.0
8H	36.7	37.2	37.7	38.2	39.5	36.6	37.1	37.6	38.1	39.4
12H	38.4	38.8	39.3	39.8	41.1	38.2	38.7	39.2	39.7	41.0
12H 4H	33.0	33.6	33.9	34.6	35.8	32.9	33.6	33.9	34.5	35.8
6H	35.6	36.1	36.5	37.1	38.3	35.5	36.0	36.5	37.0	38.3
8H	37.1	37.6	38.1	38.6	39.8	37.0	37.5	38.0	38.5	39.8
Variations with the observer position at spacings:										
S = 1.0H	+ 0.1 / - 0.1					+ 0.1 / - 0.1				
1.5H	+ 0.2 / - 0.3					+ 0.2 / - 0.3				
2.0H	+ 0.3 / - 0.4					+ 0.3 / - 0.4				

CIE Pub.117 Corrected 3577 lm Total Lamp Luminous Flux.(8log(F/F0) = 4.4)

C Range: 0 - 360DEG
 C Interval: 22.5DEG
 Test Speed: HIGH
 Temperature:25.3DEG
 Operators:LH
 Test Date:2018-01-28

γ Range: 0 - 180DEG
 γ Interval: 1.0DEG
 Test System:EVERFINE GO-2000B_V1 SYSTEM V2.0.351
 Humidity:65.0%
 Test Distance:9.660m [K=1.0000]
 Remarks:

UTILIZATION FACTORS TABLE

Test:U:219.0V I:0.1280A P:26.70W PF:0.9460 Lamp Flux:3576.8x1 lm		
NAME: 27W	TYPE:	WEIGHT:
SPEC.:	DIM.:	SERIAL No.:
MFR.: EVERFINE	SUR.:0.07*0.1	Shielding Angle:

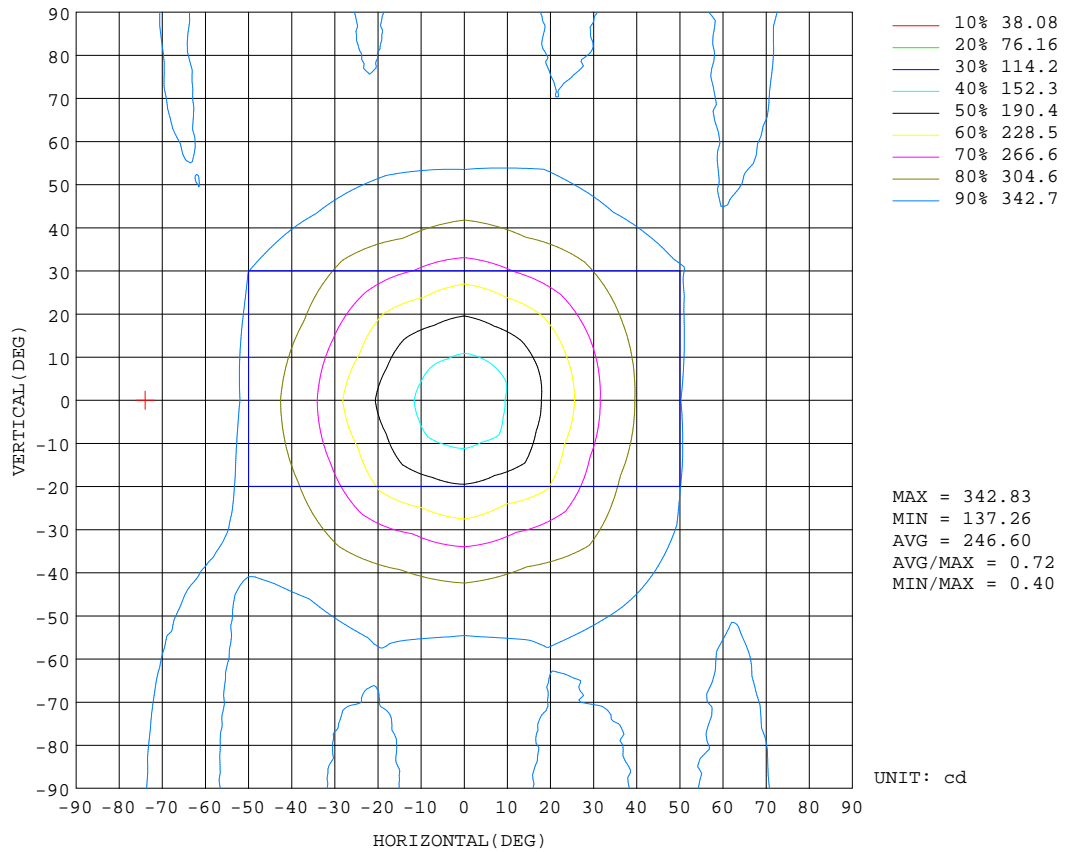
REFLECTANCE										
Ceiling	0.8	0.8	0.8	0.7	0.7	0.7	0.5	0.5	0.5	0
Walls	0.7	0.5	0.3	0.7	0.5	0.3	0.7	0.5	0.3	0
Working plane	0.2	0.2	0.2	0.2	0.2	0.2	0.2	0.2	0.2	0
ROOM INDEX	UTILIZATION FACTORS(PERCENT) $k(RI) \times RCR = 5$									
k = 0.60	36	23	15	34	22	15	31	20	14	7
0.80	44	30	21	42	29	20	37	26	19	10
1.00	51	37	27	48	35	26	43	34	24	13
1.25	58	44	34	55	41	32	48	37	29	16
1.50	64	49	39	60	47	37	52	41	34	19
2.00	72	58	48	67	55	46	58	48	41	24
2.50	77	64	55	71	60	52	62	53	46	27
3.00	81	70	60	75	65	57	65	57	50	30
4.00	86	77	68	80	71	64	69	62	56	34
5.00	90	81	74	83	76	69	71	65	60	37
ROOM INDEX	UF(total)									Direct
According to DIN EN 13032-2 2004			Suspended				SHRNOM = 1.25			

C Range: 0 - 360DEG
 C Interval: 22.5DEG
 Test Speed: HIGH
 Temperature:25.3DEG
 Operators:LH
 Test Date:2018-01-28

γ Range: 0 - 180DEG
 γ Interval: 1.0DEG
 Test System:EVERFINE GO-2000B_V1 SYSTEM V2.0.351
 Humidity:65.0%
 Test Distance:9.660m [K=1.0000]
 Remarks:

ISOCANDELA DIAGRAM

Test:U:219.0V I:0.1280A P:26.70W PF:0.9460 Lamp Flux:3576.8x1 lm		
NAME: 27W	TYPE:	WEIGHT:
SPEC.:	DIM.:	SERIAL No.:
MFR.: EVERFINE	SUR.:0.07*0.1	Shielding Angle:

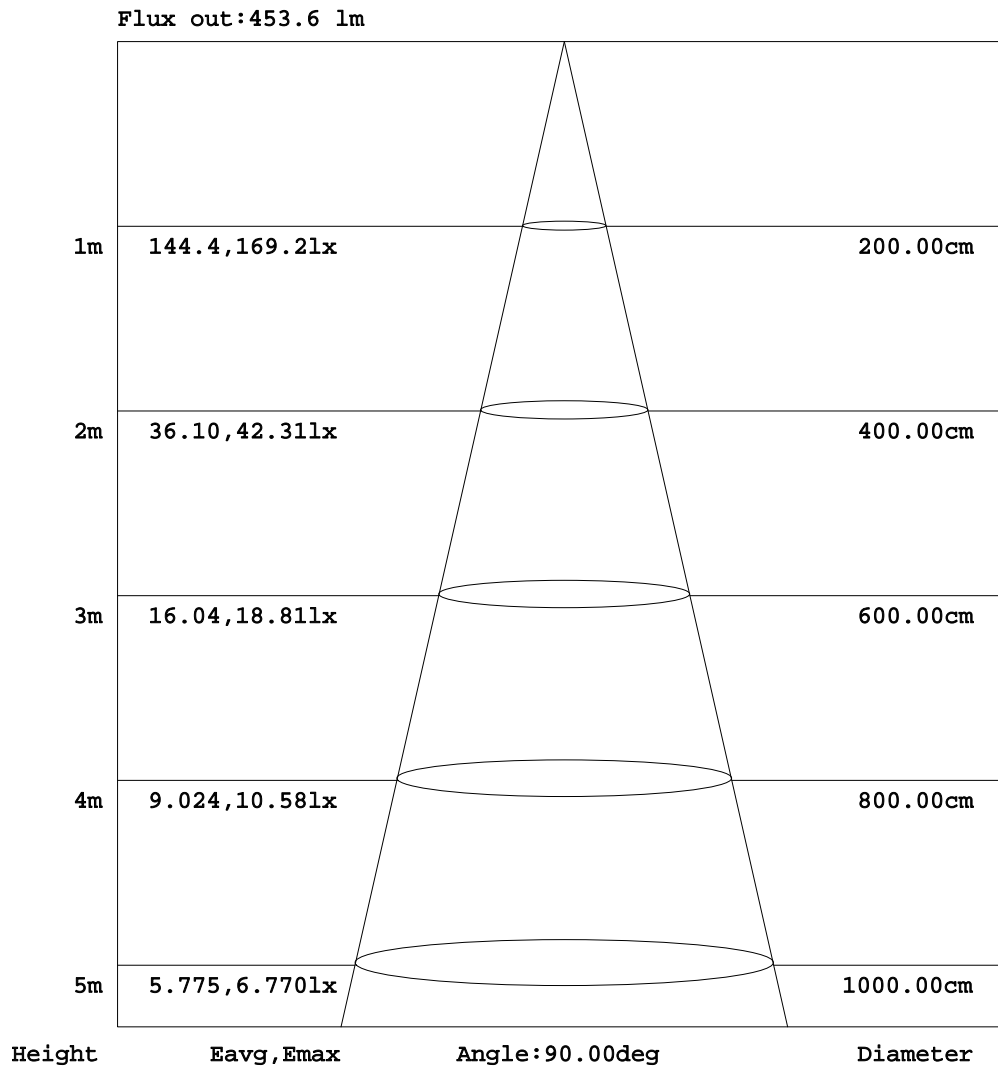


C Range: 0 - 360DEG
 C Interval: 22.5DEG
 Test Speed: HIGH
 Temperature:25.3DEG
 Operators:LH
 Test Date:2018-01-28

γ Range: 0 - 180DEG
 γ Interval: 1.0DEG
 Test System:EVERFINE GO-2000B_V1 SYSTEM V2.0.351
 Humidity:65.0%
 Test Distance:9.660m [K=1.0000]
 Remarks:

AAI Figure

Test:U:219.0V I:0.1280A P:26.70W PF:0.9460 Lamp Flux:3576.8x1 lm		
NAME: 27W	TYPE:	WEIGHT:
SPEC.:	DIM.:	SERIAL No.:
MFR.: EVERFINE	SUR.:0.07*0.1	Shielding Angle:



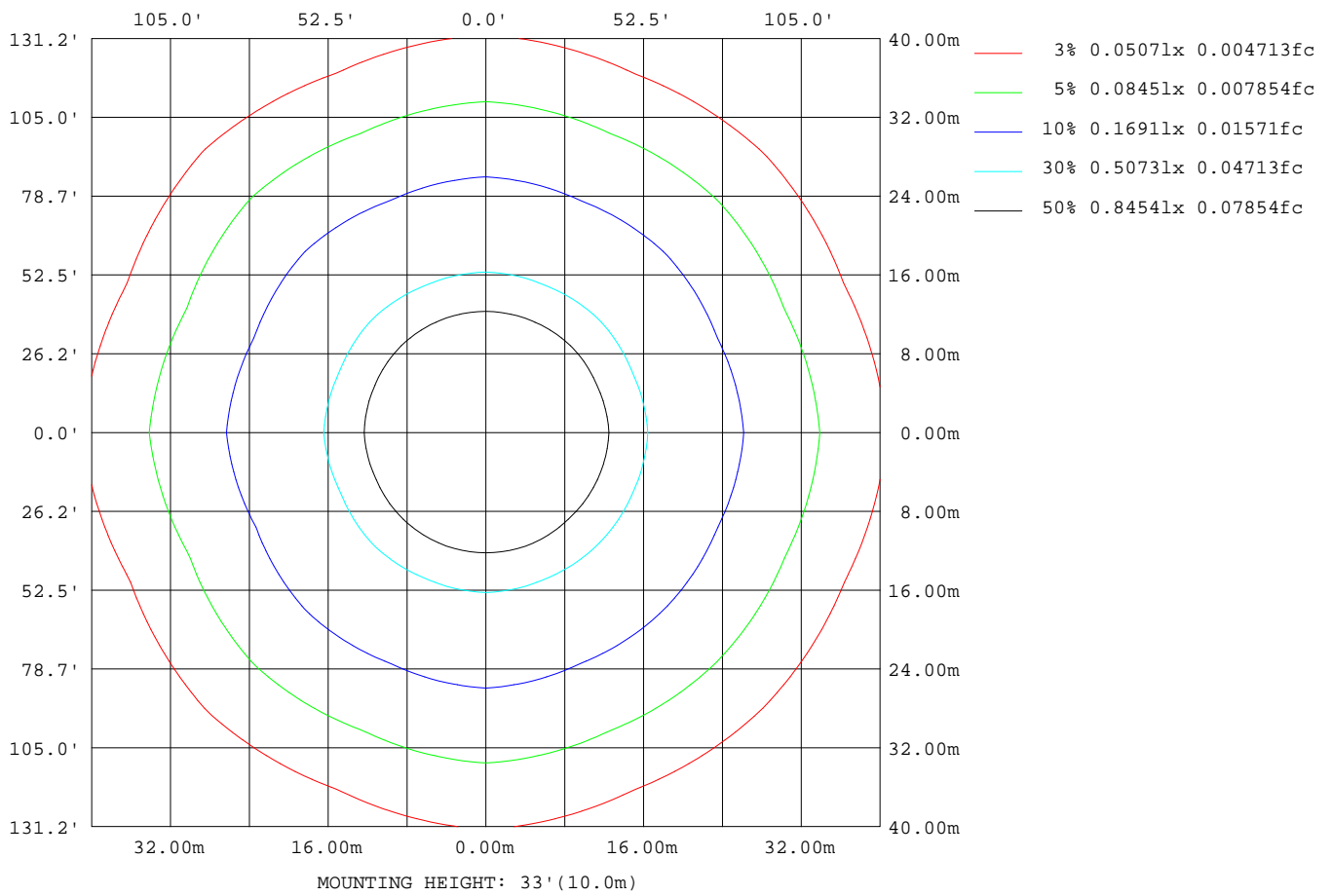
Note:The Curves indicate the illuminated area and the average illumination when the luminaire is at different distance.

C Range: 0 - 360DEG
 C Interval: 22.5DEG
 Test Speed: HIGH
 Temperature:25.3DEG
 Operators:LH
 Test Date:2018-01-28

γ Range: 0 - 180DEG
 γ Interval: 1.0DEG
 Test System:EVERFINE GO-2000B_V1 SYSTEM V2.0.351
 Humidity:65.0%
 Test Distance:9.660m [K=1.0000]
 Remarks:

ISOLUX DIAGRAM

Test:U:219.0V I:0.1280A P:26.70W PF:0.9460 Lamp Flux:3576.8x1 lm		
NAME: 27W	TYPE:	WEIGHT:
SPEC.:	DIM.:	SERIAL No.:
MFR.: EVERFINE	SUR.:0.07*0.1	Shielding Angle:



C Range: 0 - 360DEG
 C Interval: 22.5DEG
 Test Speed: HIGH
 Temperature:25.3DEG
 Operators:LH
 Test Date:2018-01-28

γ Range: 0 - 180DEG
 γ Interval: 1.0DEG
 Test System:EVERFINE GO-2000B_V1 SYSTEM V2.0.351
 Humidity:65.0%
 Test Distance:9.660m [K=1.0000]
 Remarks:

LED Avg.L Report

Test:U:219.0V I:0.1280A P:26.70W PF:0.9460 Lamp Flux:3576.8x1 lm		
NAME: 27W	TYPE:	WEIGHT:
SPEC.:	DIM.:	SERIAL No.:
MFR.: EVERFINE	SUR.:0.07*0.1	Shielding Angle:

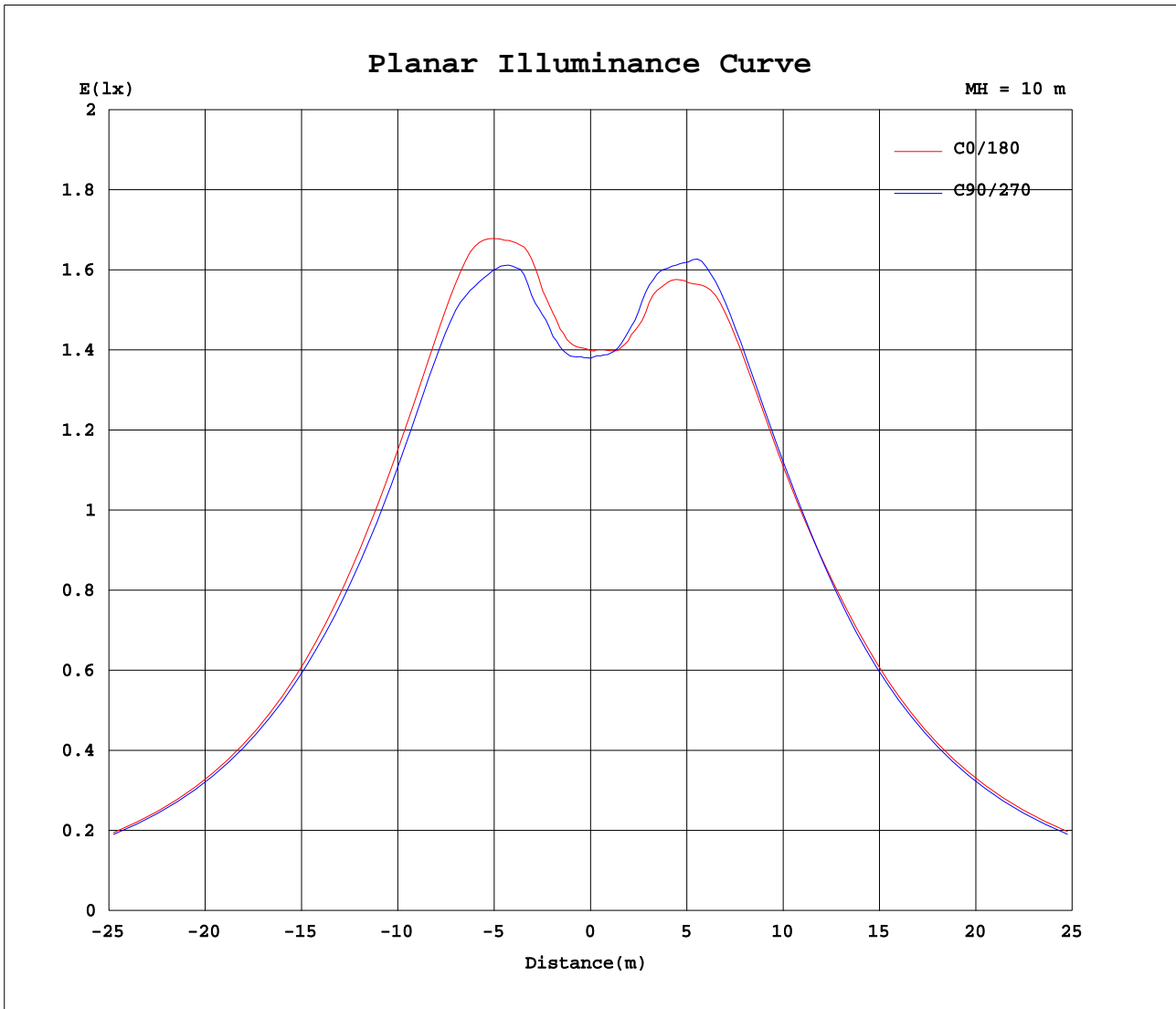
AvgL	cd/m2
L_0~180(65)av	123642
L_0~180(75)av	205779
L_0~180(85)av	608991
L_90~270(65)av	122342
L_90~270(75)av	200994
L_90~270(85)av	595907
L_45(65)av	120030
L_45(75)av	196947
L_45(85)av	585320

Standard: GB/T 29293-2012

C Range: 0 - 360DEG
 C Interval: 22.5DEG
 Test Speed: HIGH
 Temperature:25.3DEG
 Operators:LH
 Test Date:2018-01-28

γ Range: 0 - 180DEG
 γ Interval: 1.0DEG
 Test System:EVERFINE GO-2000B_V1 SYSTEM V2.0.351
 Humidity:65.0%
 Test Distance:9.660m [K=1.0000]
 Remarks:

Planar Illuminance Curve



C Range: 0 - 360DEG
 C Interval: 22.5DEG
 Test Speed: HIGH
 Temperature: 25.3DEG
 Operators: LH
 Test Date: 2018-01-28

γ Range: 0 - 180DEG
 γ Interval: 1.0DEG
 Test System: EVERFINE GO-2000B_V1 SYSTEM V2.0.351
 Humidity: 65.0%
 Test Distance: 9.660m [K=1.0000]
 Remarks:

LUMINOUS DISTRIBUTION INTENSITY DATA

Test:U:219.0V I:0.1280A P:26.70W PF:0.9460 Lamp Flux:3576.8x1 lm		
NAME: 27W	TYPE:	WEIGHT:
SPEC.:	DIM.:	SERIAL No.:
MFR.: EVERFINE	SUR.:0.07*0.1	Shielding Angle:

Table--1

UNIT: cd

C(DEG) γ (DEG)	0	22.5	45	67.5	90	112.5	135	157.5	180	202.5	225	247.5	270	292.5	315	337.5			
0	138	138	138	138	138	138	138	138	138	138	138	138	138	138	138	138			
5	141	141	140	140	140	140	140	140	140	140	141	141	141	141	141	141			
10	153	152	148	150	149	149	148	149	146	149	149	151	150	152	152	152			
15	173	173	164	171	167	168	164	168	162	167	166	172	169	173	172	174			
20	198	200	189	197	193	195	189	194	185	192	191	198	193	200	196	200			
25	223	226	212	224	217	221	212	220	209	219	215	225	218	226	221	226			
30	254	254	239	250	242	249	239	248	238	247	246	257	250	256	254	257			
35	282	281	269	278	273	276	269	274	268	275	274	282	277	285	279	284			
40	303	304	291	301	297	300	293	298	291	299	296	306	298	306	301	306			
45	322	320	310	319	314	318	312	316	310	317	315	322	318	322	320	323			
50	338	332	326	331	330	332	330	329	331	330	333	335	335	335	337	335			
55	350	340	338	339	345	341	343	338	348	339	346	344	347	344	349	343			
60	358	344	344	343	355	345	351	342	359	343	355	348	357	348	355	347			
65	364	343	345	342	361	346	355	342	368	344	362	348	363	348	358	347			
70	367	341	346	341	365	343	356	339	374	341	364	345	364	346	358	344			
75	369	339	346	337	364	339	358	337	376	340	365	344	364	344	358	342			
80	368	338	344	336	363	337	359	334	376	336	369	340	365	342	356	340			
85	369	337	345	336	363	336	359	333	375	335	369	339	364	340	356	339			
90	368	335	345	334	363	335	359	332	373	335	369	338	363	339	354	337			
95	364	332	341	331	360	332	355	330	371	332	365	335	360	336	351	334			
100	358	327	335	327	354	327	348	325	366	327	358	330	355	331	345	329			
105	348	320	327	321	345	320	338	318	357	320	346	323	346	323	336	322			
110	333	310	315	311	332	311	324	308	343	311	331	313	332	313	324	312			
115	314	297	299	297	315	299	308	296	322	298	314	301	315	300	309	299			
120	292	282	281	282	294	284	290	281	298	284	293	286	294	285	290	284			
125	269	264	260	264	269	266	268	264	272	265	269	267	269	266	268	266			
130	243	242	234	241	242	244	241	242	242	243	243	245	242	244	242	243			
135	215	213	206	213	214	216	213	214	213	216	215	217	215	215	214	214			
140	181	182	172	182	181	185	180	184	180	184	181	186	181	183	180	183			
145	150	153	143	154	151	156	149	154	148	153	150	155	149	153	149	153			
150	118	125	113	126	121	129	119	126	116	125	118	128	117	124	118	126			
155	88.0	91.4	83.8	92.0	91.2	96.5	89.6	97.1	85.1	95.1	88.7	95.1	86.3	91.7	86.7	90.7			
160	53.9	55.1	50.1	56.8	56.6	59.5	55.7	63.0	54.2	61.8	55.0	57.7	51.7	55.7	50.8	54.6			
165	23.8	24.3	22.0	27.2	26.3	30.1	28.3	30.1	25.7	29.9	24.8	26.3	22.9	26.0	22.6	23.3			
170	5.34	5.85	5.61	6.74	7.75	8.56	8.55	8.82	7.65	8.10	6.23	6.06	5.69	5.65	4.32	5.86			
175	1.29	1.24	1.30	1.23	1.35	1.28	1.54	1.51	1.44	1.38	1.24	1.32	1.25	1.31	1.24	1.29			
180	1.23	1.22	1.23	1.23	1.23	1.24	1.22	1.23	1.23	1.22	1.24	1.24	1.23	1.24	1.21	1.24			

C Range: 0 - 360DEG
 C Interval: 22.5DEG
 Test Speed: HIGH
 Temperature:25.3DEG
 Operators:LH
 Test Date:2018-01-28

γ Range: 0 - 180DEG
 γ Interval: 1.0DEG
 Test System:EVERFINE GO-2000B_V1 SYSTEM V2.0.351
 Humidity:65.0%
 Test Distance:9.660m [K=1.0000]
 Remarks: